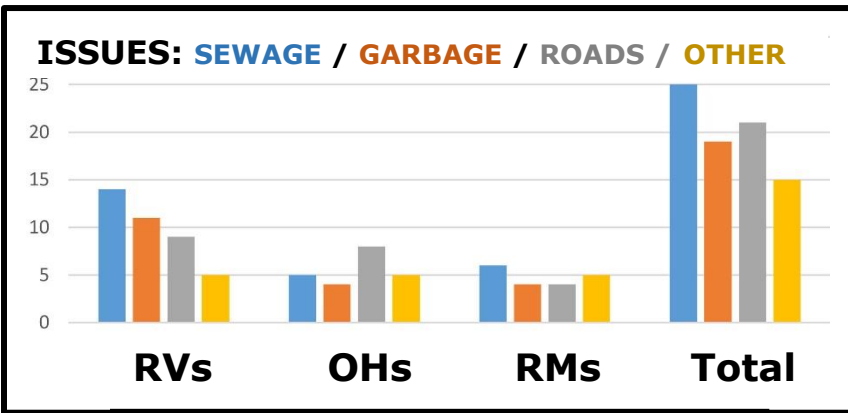


PARCS UPDATE #98
March, 2019

"77 leaders responded to our LEADERS' SURVEY!"

We asked you to identify **2 MAIN ISSUES** that have occupied much of your meeting time over the past **5 years**. There was much similarity in your replies.



Our **LEADERS' SURVEY** went out on Feb. 12, 2019, as the:

- **RV EDITION** to administrators, mayors and councillors,
- **OH EDITION** to OH boards,
- **RM EDITION** to administrators, Reeves and councillors.

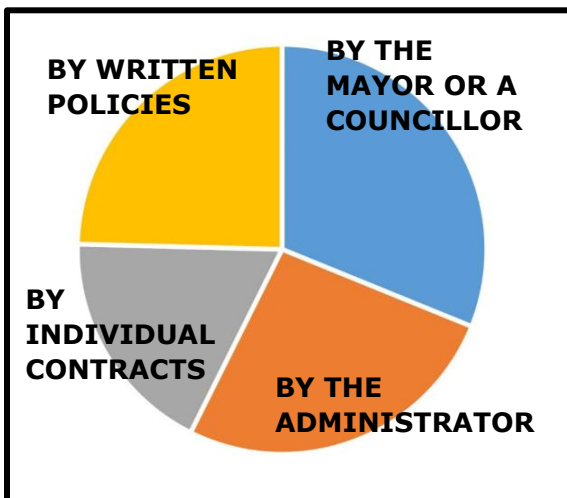
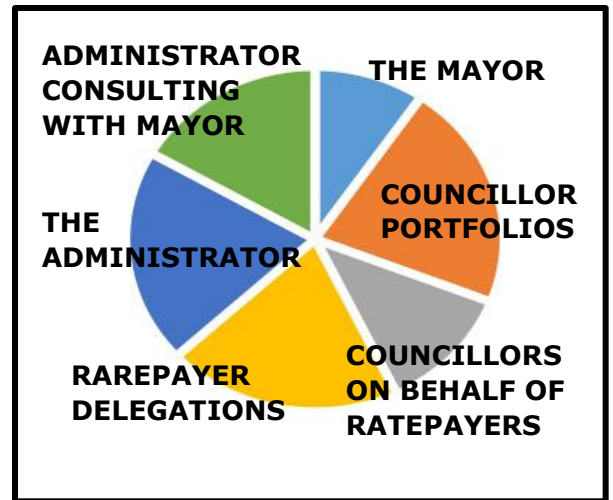
In the **10-question surveys**, 7 questions were the same for all editions and 3 questions differed for the OH/RM editions versus the RV edition.

Here is a **peek preview** of some of the **anonymous** answers from: **31 RV, 29 OH** and **17 RM** leaders.

The PARCS Directors began their analysis of your replies at their March 5 meeting and will continue at their April meeting. This report offers no analysis, only facts about what was reported. **Thank you to all who replied!**

What was reported about HOW RESORT VILLAGE COUNCILS OPERATE

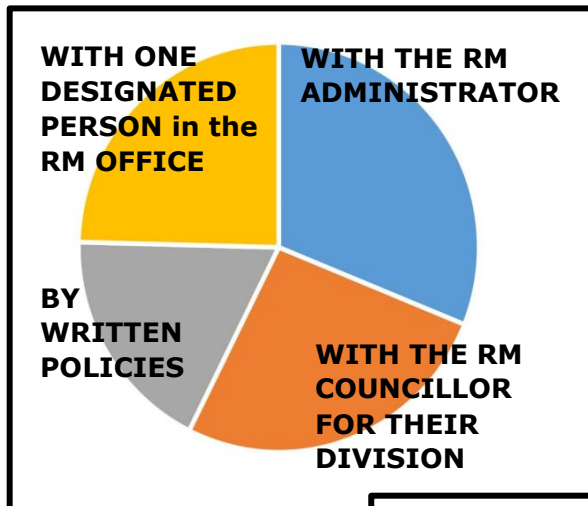
How do items get included on the **AGENDA** for meetings of the Resort Village Council?



How are Resort Village **STAFF INFORMED** about their duties and their rights?



What was reported about how OHS and RMs OPERATE ¹



Who do Organized Hamlet Boards **WORK WITH** at their Rural Municipality?

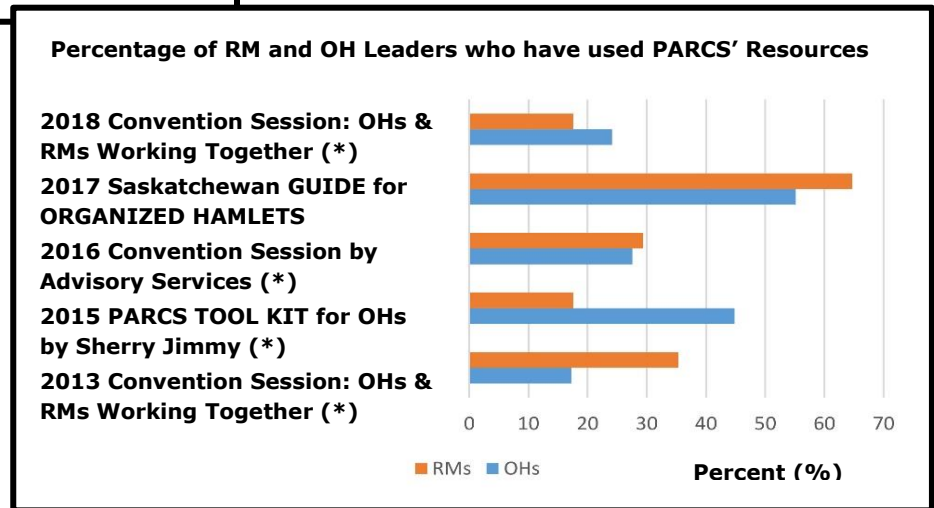


Have OH boards or RM councillors **USED the PARCS RESOURCES?**

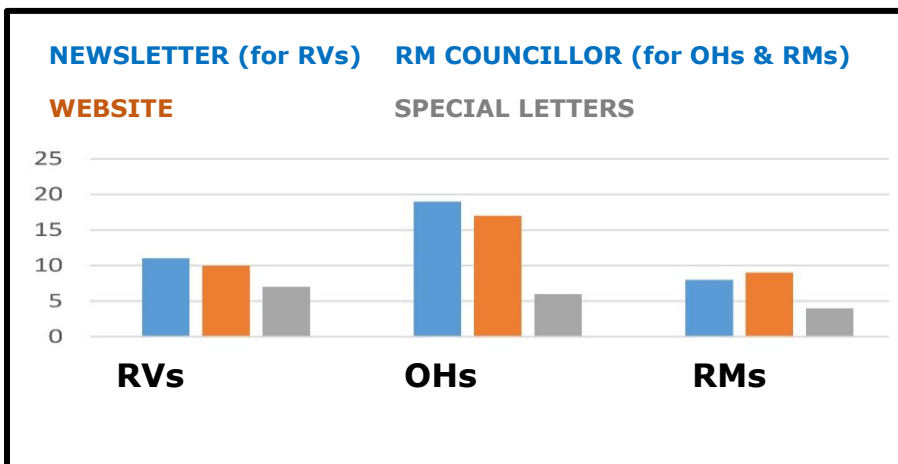


Approximately half of the survey responders in OHs and RMs use the province's GUIDE FOR ORGANIZED HAMLETS.

Fewer than 40% of the OH & RM responders use the PARCS reference material from previous conventions.



What was reported about how citizens are informed **ABOUT BYLAWS**



Resort Villages keep citizens informed with **newsletters**.

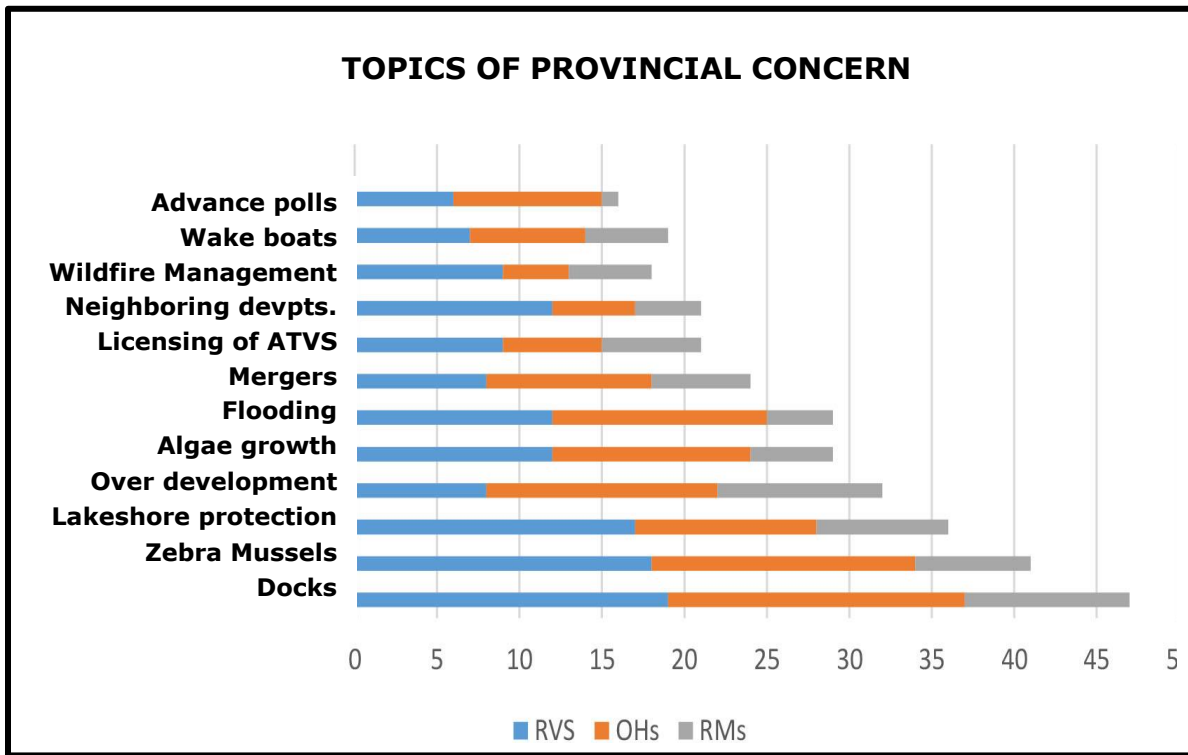
Some OHs use email newsletters.

RMs do not appear to use newsletters. Some use their councillors to pass along information.

Most RVs and RMs post their **bylaws on websites** and sometimes send out special letters about new bylaws.

¹(*) Documents & slide presentations from past conventions are available by consulting the RESOURCE CATALOGUE on the front page of the PARCS WEBSITE (skparcs.com) & emailing a request (parcs@sasktel.net) for them to be emailed to you.

Topics that have been **DISCUSSED IN DEPTH** at your meetings



Leaders of cottage communities have discussed many of the topics featured in our PARCS newsletters.

Docks were most discussed. Most of the remaining topics were about protecting the **lakeshore environment** from: zebra mussels, over development, floods, wake boats, etc.

Two survey questions that elicited **A GREAT DEAL OF CONSENSUS**

The RV Edition and OH Edition asked responders to identify examples of **COMMUNITY SPIRIT EVENTS** that were hosted in their cottage communities. While the RV replies were more varied², **responders from both types of cottage communities were strongly committed to the importance of having events that would help build a sense of community** (especially since residents came from varied home-bases and since most do not live at the cottage year-round). The RM Edition asked about the involvement of RM councillors in these events. A few RM responders replied that they were invited but did not typically attend; one said they were not invited; six RM responders skipped this question.

The RV Edition asked about examples of **REGIONAL COLLABORATION** for services such as lagoon access, potable water, use of a garbage dump or a transfer site, road maintenance or firefighting services. Of the 28 RV respondents, all but one **reported enthusiastically about joint ventures**. Four RV respondents reported that these arrangements had been made through a formal Regional Authority, others spoke about Mutual Aid Agreements and Joint Use Agreements. Although the province has been strongly urging neighboring communities to establish formal Regional Planning Authorities, these survey results would seem to indicate that **most resort villages have already gone ahead and set up sharing agreements where they were needed, most without the formal establishment of Regional Authorities, and most based on mutual need**.

² Likely because RVs tend to have more facilities such as community halls.